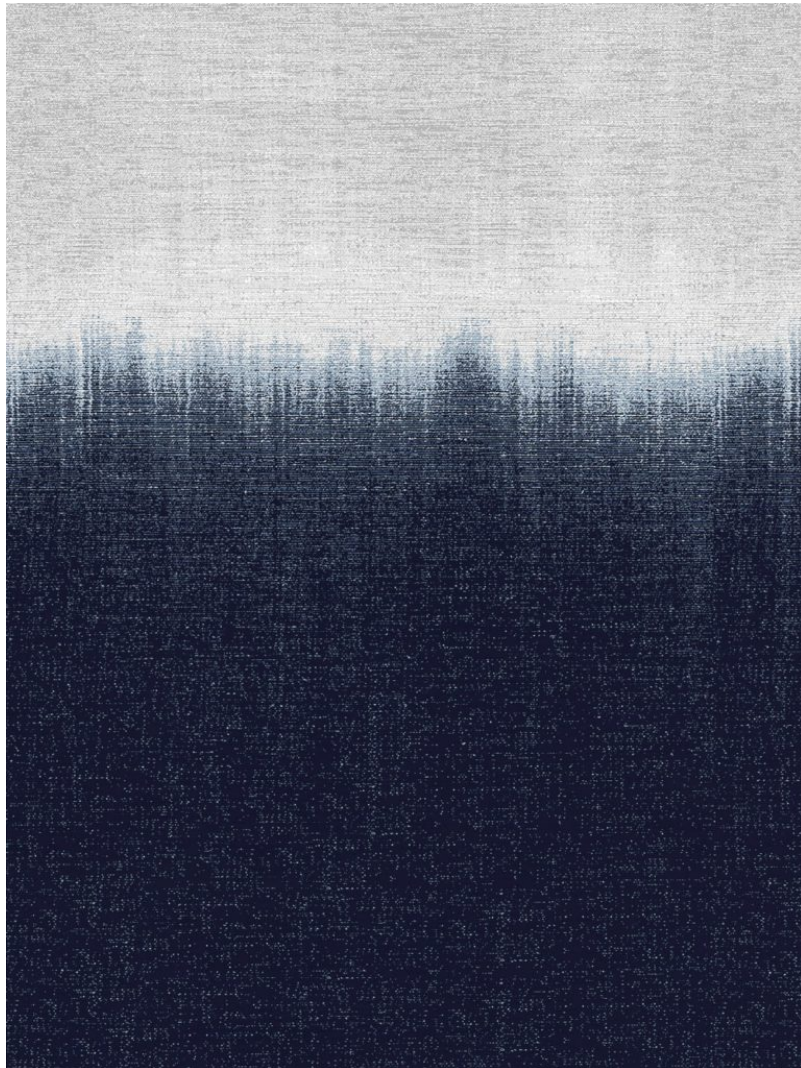


P E R E N N I A L S



Blue Jean

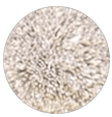
Take The Plunge Tibetan Knot

TK357-501-0912

DETAILS & SPECS

Designer	Studio
Construction	Tibetan Knot
Colorway	Blue Jean
Collection	2017 B Fall

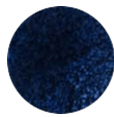
Pom Colors



188



129



284

DESCRIPTION

Hand knotted, 80 knots per square inch.